

Saskatoon Strings Violin Audition 2024

1) 4 Scales (all two octaves)

One major scale in a flat key

One melodic minor scale

A chromatic scale

A G+ scale where you may be asked for 2, 3, or 4 notes/bow, or for staccato or spiccato

Demonstrate shifting on any of these scales if you can

2) Sight Reading

3) Polished piece of your choice

4) Audition Etude (see attached)

5) Excerpt (see attached). On the advice of your teacher, choose between auditioning for Violin 1, Violin 2, or Violin 3

Indicated by orange brackets:

Violin I: **Pavane:** bars 43 - 48, 56 - 70,
 Brandenburg Concerto No. 4 : bars 11 - beat 3 of bar 27,
 43 - 62, 96 - 1st beat of 117

Violin II: **Pavane:** bars 43 - 48, 55 - 64
 Brandenburg Concerto No. 4 : bars 45 - 58, 106 - 121

Violin III : **Pavane:** bars 1 - 10, 18 - 1st beat of 27, 44 - 50
 Brandenburg Concerto No. 4 : bars 1 - 10, 86 - 113

For more information, please contact Paul at info@sy0.ca

VIOLIN

Saskatoon Strings Audition Etude

M.M. ♩ = 66 - 76

Measures 1-3 of the etude. The key signature is one sharp (F#). The first measure starts with a treble clef and a common time signature. The music features a series of eighth and sixteenth notes, with some measures containing a 'V' above the staff. The dynamic marking *mf* is present. The term 'martelé' is written below the staff. The second measure has a 'V' above the staff. The third measure has a 'V' above the staff and a 'crescendo' marking.

mf martelé *mp* crescendo

Measures 4-6 of the etude. The key signature is one sharp (F#). The first measure starts with a treble clef and a common time signature. The music features a series of eighth and sixteenth notes, with some measures containing a 'V' above the staff. The dynamic marking *mf* is present. The term 'martelé' is written below the staff. The second measure has a 'V' above the staff. The third measure has a 'V' above the staff and a 'spiccato' marking. The fourth measure has a 'V' above the staff and a 'f' marking. The fifth measure has a 'V' above the staff and a 'slower M.M. ♩ = circa 60' marking. The sixth measure has a 'V' above the staff and a 'f' marking.

mf martelé spiccato *f* slower M.M. ♩ = circa 60

Measures 7-9 of the etude. The key signature is one sharp (F#). The first measure starts with a treble clef and a common time signature. The music features a series of eighth and sixteenth notes, with some measures containing a 'V' above the staff. The dynamic marking *mf* is present. The term 'decrecendo' is written below the staff. The second measure has a 'V' above the staff. The third measure has a 'V' above the staff. The fourth measure has a 'V' above the staff. The fifth measure has a 'V' above the staff. The sixth measure has a 'V' above the staff. The seventh measure has a 'V' above the staff. The eighth measure has a 'V' above the staff. The ninth measure has a 'V' above the staff and a 'p' marking.

mf decrecendo *p*

Violin I

Pavane
Op. 50GABRIEL FAURÉ
Arranged by Larry Clark

Andante Espressivo

CAS16

Handwritten annotations in orange include brackets and numbers (1, 2, 3, 4, 5, 6, 7, 8, 9, 10, 14, 18, 27, 35, 43, 51, 60, 70, 76) marking specific measures or groups of measures. Some measures are also marked with 'V' for breath marks or 'L' for solo.

Performance instructions and dynamics include:

- p dolce espressivo* (measures 2-5)
- mp* (measures 6, 14, 15, 31, 39)
- mf* (measures 27, 35, 43, 60)
- f* (measures 43, 64)
- p* (measures 51, 68, 75)
- pp* (measures 70, 84)
- rit.* (measures 67, 74)
- a tempo* (measures 70, 76)
- Solo* (measure 51)
- arco* (measure 85)
- pizz.* (measure 84)

The score is written on a single staff in G major (one sharp) and 4/4 time. The key signature is G major, and the time signature is 4/4. The tempo is marked 'Andante Espressivo'. The score includes various musical notations such as slurs, ties, and dynamic markings.

Brandenburg Concerto No. 4

VIOLIN I

(3rd Movement)

J. S. Bach
Arr. by Mark Jasinski

Allegro

1-10 10 11 12 13 V V 14 15 16 17 18 19 20 (b) 21 22 23 24 25 V 26 27 28 29 30 31 32 33 34 35 V 36 V 37 V 38 39 40 41 42 43 44 45 46 47 48 49 50 51 52 53 54 55 56 57 58 59 60 (b) 61 V V

f *mf* *f* *mf*

Violin I - 2

Violin I - 2 musical score, measures 62-121. The score is written in treble clef with a key signature of one sharp (F#). The music features various rhythmic patterns, including eighth and sixteenth notes, and rests. Dynamic markings include *f* (forte) and *rit.* (ritardando). Performance instructions include *V* (Violin) and *V* (Violoncello). The score is divided into systems, with measures 62-66, 67-71, 72-77, 78-83, 84-88, 89-93, 94-98, 99-103, 104-108, 109-113, 114-118, and 119-121. A large orange bracket highlights measures 94-98, and a smaller orange bracket highlights measures 116-118.

Measures 62-66: 62, 63, 64, 65, 66. Measure 63 is boxed.

Measures 67-71: 67, 68, 69, 70, 71. Measure 71 has a *f* marking.

Measures 72-77: 72, 73^V, 74, 75, 76, 77. Measure 76 is boxed and has a *f* marking.

Measures 78-83: 78, 79, 80, 81, 82^V, 83. Measure 80 has a *f* marking.

Measures 84-88: 84, 85, 86, 87, 88. Measure 84 is boxed.

Measures 89-93: 89, 90, 91, 92, 93. Measure 91 has a *(b)* marking.

Measures 94-98: 94, 95, 96, 97, 98. Measure 96 is boxed and has a *f* marking.

Measures 99-103: 99, 100, 101, 102^V, 103. Measure 102 has a *f* marking.

Measures 104-108: 104, 105, 106, 107, 108. Measure 106 is boxed.

Measures 109-113: 109, 110, 111, 112, 113. Measure 111 has a *f* marking.

Measures 114-118: 114, 115, 116, 117, 118. Measure 116 is boxed.

Measures 119-121: 119, 120, 121. Measure 121 has a *rit.* marking.

Brandenburg Concerto No. 4

(3rd Movement)

VIOLIN II

J. S. Bach
Arr. by Mark Jasinski

1-4 Allegro

5 f

6

7 V V

8

9

10

11

12

13

14

15

16

17

18

19

20 V

21

22 (#)

23 V

24 V

25

26

27

28

29

30

31

32

33

34

35

36

37

38

39

40

41

42

43 - 44

45 f

46 V

47

48

49

50

51 V

52

53

54

55 V V

56

57

58 - 61

62 V

mf

45-57

Violin II - 2

63

64 65 66 67

68 69 70 71 72

73 74 75 76 V 77

79 80 81 V 82 V 83

84 V 84 85 86 87 88 89

90 91 92 93 94 V 95 96

97 97 98 99 V 100 V 101

f

102 V 103 104 V 105 106 *f*

107 V 108 V 109 V 110 V 111 V

112 113 114 115 116

117 118 119 120 121

rit.

Pavane
Op. 50GABRIEL FAURÉ
Arranged by Larry Clark

CAS16

Andante Espressivo

pizz.

pp

6

p

10

14 arco

mp

18 Solo

mf

All

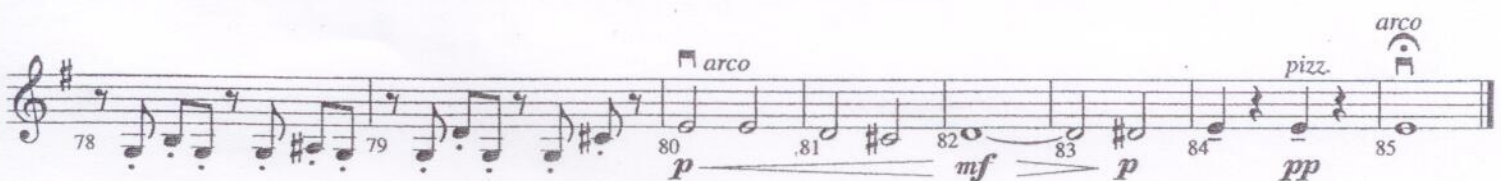
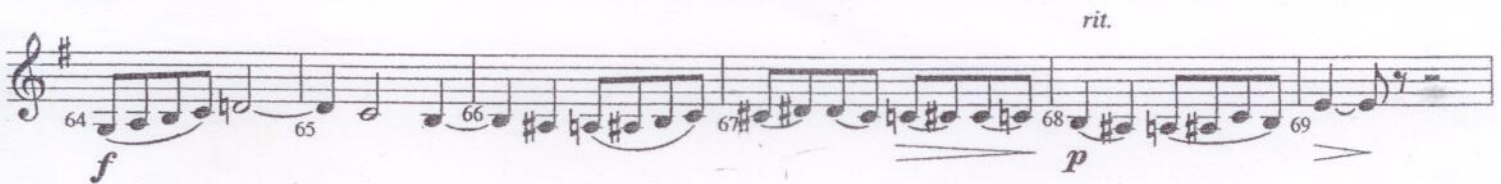
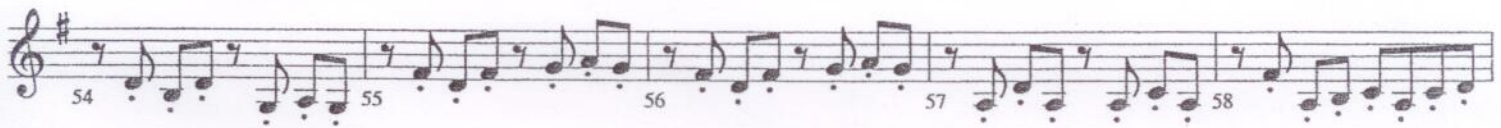
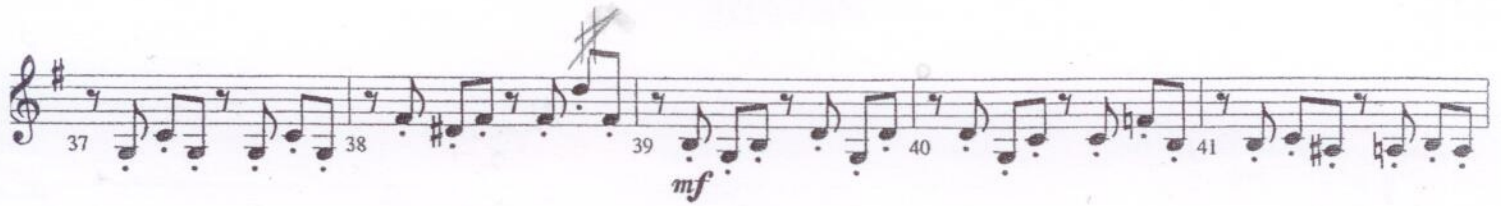
27

pizz.

mf

35

1-9
18-27
44-49



Brandenburg Concerto #4

Bach

Violin 3 $\text{♩} = 60$ *f* V V

8 *mf*

16 V

23 V

31

38 *f* V V

47 *mf* 1-8 86-112

